

EYEZONE B401

User Manual



CONTENTS

1. Package Contents.....	1
2. Introduction.....	1
3. Features.....	2
4. Hardware Overview.....	2
5. Remote Control.....	3
6. Setting Up.....	4
6.1 SLIDE SETUP.....	4
6.2 MUSIC SETUP.....	4
6.3 MOVIE SETUP.....	4
6.4 SLIDESHOW SETUP.....	5
6.5 PREFERENCE.....	5
7. Network Installation.....	6
7.1 Login B401 for the First Time.....	6
7.2 Router Quick Setup.....	8
7.3 Connecting Multiple B401 to a Router.....	9
7.4 Limitation of the FTP Protocol.....	11
7.5 Connecting to ADSL.....	12
7.6 Auto-Display Function.....	14
7.7 FTP Download Function.....	14
7.8 Remote Control to Display Media Files.....	15
8. Using the B401.....	16
8.1 Play Picture File.....	16
8.2 Play Music File.....	17
8.3 Play Movie File.....	18
8.4 File Library.....	19
8.5 Hot Key.....	19
9. Troubleshooting.....	20

1. PACKAGE CONTENT



- | | |
|-------------------|------------------------------|
| 1. B401 | 5. S-Video Cable |
| 2. Quick Guide | 6. Audio Cable |
| 3. Remote Control | 7. Power Adapter (DC 5V, 2A) |
| 4. RJ-45 Cable | 8. CD Driver |

2. INTRODUCTION

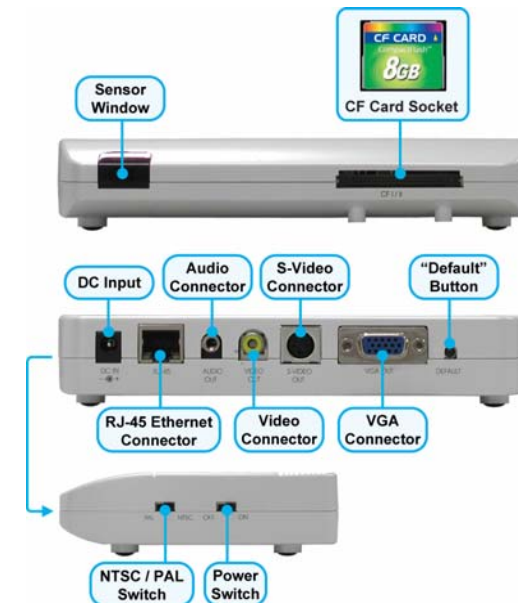
The Eyezone B401 is a network media player that provides all kinds of network connections. With the auto download function, the Eyezone B401 will connect to remote FTP server and download the latest media files to the CF card automatically at the designated time. It can be remotely controlled over a network to play media files without a computer.

By connecting Video, S-Video, VGA and Audio, you can play the shows on TV or any big screen for advertising, presentations, training, and other media applications.

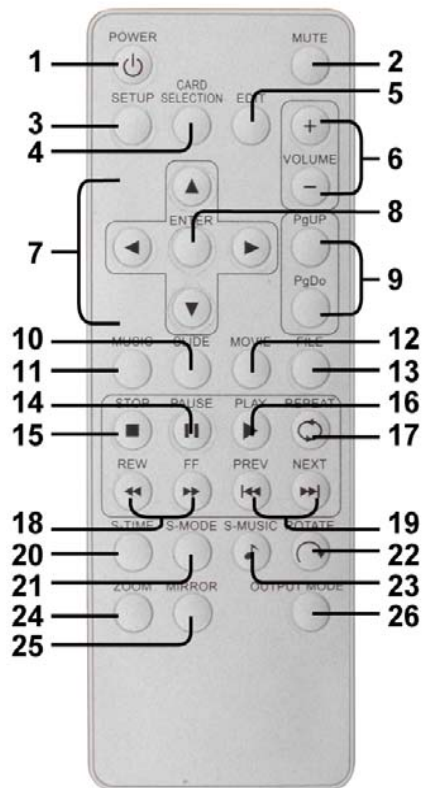
3. FEATURES

- Uses Ethernet RJ-45, 10/ 100 Base- T.
- Network remote control function (start and stop) through the IE browser.
- Embedded FTP Server: Upload, delete, download and rename media files under the CF card.
- Supports multiple network services : HTTP (User Interface), FTP (File Management), PPPoE (Fixed IP Address is recommended), Dynamic DNS, and firewall port forwarding (used in virtual IP address).
- **Auto Download Function:** The Eyezone B401 will auto-download the latest files to CF card at the designated time from the designated server.
- Supports multiple file formats: Picture, Music and Video.
- Supports CF memory card.
- Supports Video, S-Video, VGA and Audio output.
- Supports NTSC and PAL format.
- Includes a full-function infrared remote control.
- Multi-Language OSD : English, French, German, Italian, Portuguese, Spanish, Netherlands, Japanese and Chinese.
- Supports SLIDE SHOW Function: With 14 kinds of transition effects.
- Supports SLIDE TIME (INTERVAL) Mode : Interval time with 1, 3, 5, 10, 30, 60 seconds.
- Supports MUSIC SLIDE Show : Music and pictures play at the same time.
- Supports ZOOM IN (ON) 4x & PAN, ROTATE, MIRROR, PREVIEW and REPEAT.

4. HARDWARE OVERVIEW



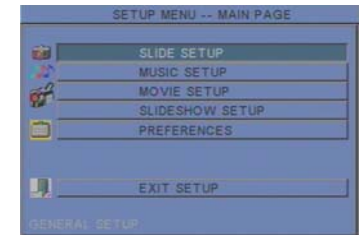
5. REMOTE CONTROL



- 1 Power on/ off
- 2 Mute sound
- 3 Open the setup menu
- 4 No function
- 5 Show information of the file selected
- 6 Volume up/ down
- 7 Move the cursor
- 8 Confirm the selection/ entry
- 9 Go to the previous/ next page or image
- 10 Display all photo files
- 11 Display all music files
- 12 Display all movie files
- 13 Go to file library (all files)
- 14 Pause/ resume playback
- 15 Stop playback
- 16 Play the selected file
- 17 Select the repeat mode
- 18 Rewind/ forward movies
- 19 View the previous/ next file
Play the previous/ next file if in playback
- 20 Set the slideshow interval to 1, 3, 5, 10, 30, 60 seconds
- 21 Set the transition effect
- 22 Rotate photo 90 degrees clockwise on the screen
- 23 Play music and pictures at the same time
- 24 Zoom in the image up to 4x magnification
- 25 Mirror the image horizontally
- 26 Select the output mode

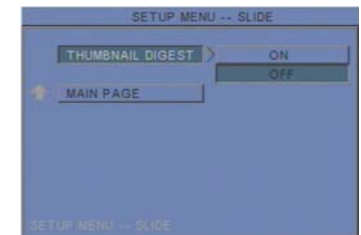
6. SETTING UP

- Press the “SETUP” button on the remote control to open the “SETUP MENU – MAIN PAGE” shown in the following figure. There are five groups of sub-menu in the setup menu.
- Use the “▲、▼、◀、▶” buttons to select an item or to adjust values, and use the “ENTER” button to go into the function or to confirm the command.



6.1 SLIDE SETUP

- **THUMBNAIL DIGEST** : Thumbnails load faster and allow you to browse photos easily.



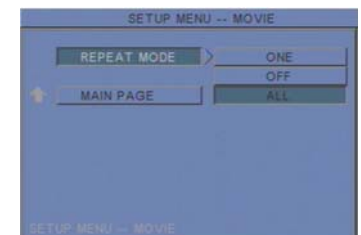
6.2 MUSIC SETUP

- **REPEAT MODE**
 - **ONE** : Repeat the selected song.
 - **ALL** : Repeat all the songs on the memory card.
 - **OFF** : Turn off the repeat function.



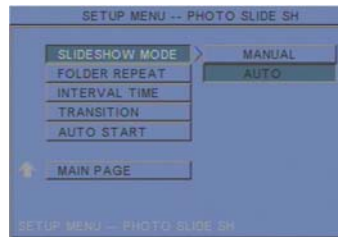
6.3 MOVIE SETUP

- **REPEAT MODE**
 - **ONE** : Repeat the selected movie.
 - **OFF** : Turn off the repeat function.
 - **ALL** : Plays all the movies on the memory card.



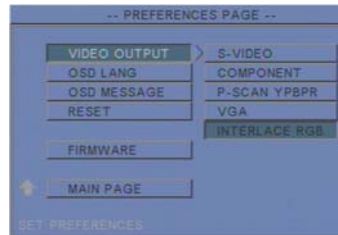
6.4 SLIDESHOW SETUP

- **SLIDESHOW MODE** : Set the slideshow to start automatically.
- **FOLDER REPEAT** : Set all files (picture, music or movie) in the folder to show only once or continuously (loop).
- **INTERVAL TIME** : Set the time each photo is shown to 1, 3, 5, 10, 30 or 60 seconds.
- **TRANSITION (EFFECT)** : Set the transition effect and auto slide with sequential or random playback.
- **AUTO START** : Enable/ disable auto playing media files on the memory card when the device is turned on.



6.5 PREFERENCE

- **VIDEO OUTPUT**: Select the output mode.
- **OSD LANG**: Select the OSD language (ENGLISH, FRENCH, GERMAN, ITALIAN, JAPANESE, PORTUGUESE, SPANISH and NEDERLANDS).
- **OSD MESSAGE**: Turn the OSD message function on/off.
- **RESET**: Reset all settings to the original (factory) settings.
- **FIRMWARE** : New F/W can upgraded from the memory card.
 - **EDITION** : Show the F/W versions.
 - **UPDATE** : Used to update the F/W.



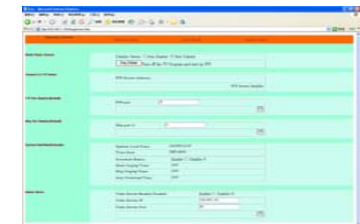
7. NETWORK INSTALLATION

7.1 LOGIN B401 FOR THE FIRST TIME

Step 1 : Execute the “ipEdit.exe” in the CD, and select the “Unblock” (Windows XP SP2 only).

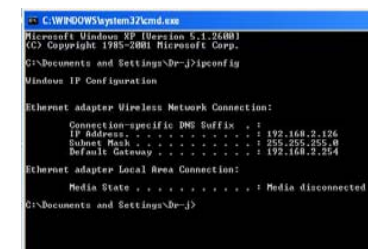
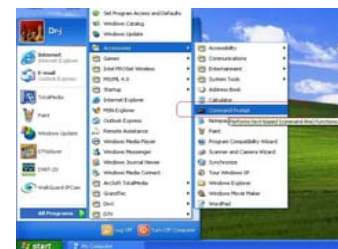


Step 2 : “IP BOX.....192.168.1.100” has been listed in the left side. Double click “192.168.1.100” to login the B401.



If you can not connect to the address : 192.168.1.100, follow the steps below to get the network information.

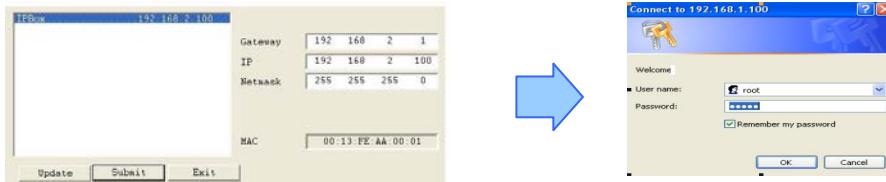
Step 3 : Click “Start” → “All Programs” → “Accessories” → “Command Prompt”.
A MS-DOS window will appear. Type “ipconfig” and then press “ENTER” to get the network information.



Step 4 : Assign IP Address, Netmask (Subnet Mask) and Gateway (Default Gateway) for the IP Controller.

NOTE : You must use the same Subnet Mask” 255.255.255.0 “and Gateway ”192.168.2.254”.
You can use any IP Address between 192.168.2.1-254, but make sure that the IP Address has never been used or is used by another IP addressable device.

Step 5 : For example, key in the following parameters and click “Submit”.



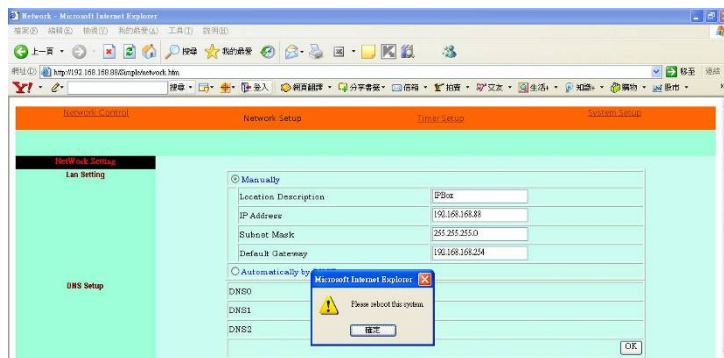
Login to the B401:

Default IP Address:<http://192.168.1.100/>

Default User ID: root

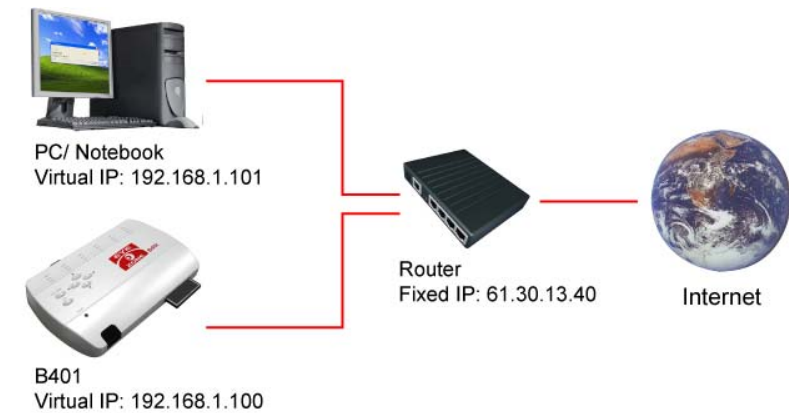
Default User Password: admin

NOTE : After setting up the Network, reboot the system.

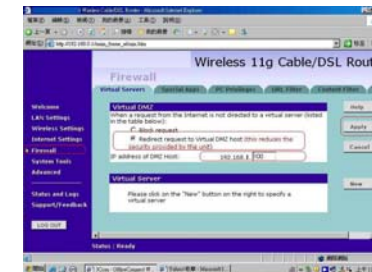


7.2 ROUTER QUICK SETUP (DMZ Function Setup)

If your network connection is setup as the figure below, you will need to setup the router.



Method 1 : Assign the DMZ function to the B401.

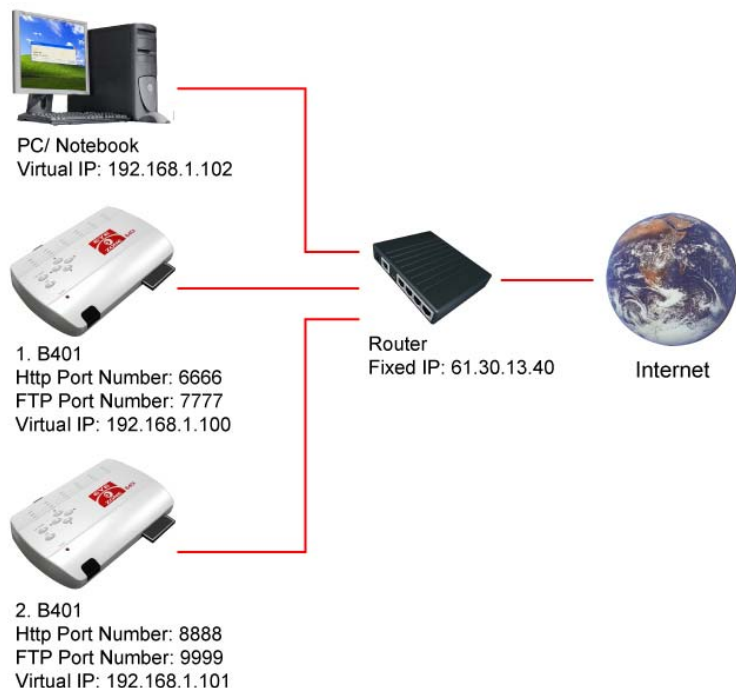


Method 2 : Assign the Port Number to the B401.

The default HTTP Port Number is 80, and the default FTP Port Number is 21.



7.3 CONNECTING MULTIPLE B401 TO A ROUTER



Step 1 : In this page <http://192.168.1.100/Simple/user.htm> (1. B401), assign two different port numbers for the FTP and Http Protocols (for example FTP : 7777, HTTP : 6666)
(After setup the Network, please remember reboot the system)

FTP Port Number(firewall)	FTP port:	7777
Http Port Number(firewall)	Http port 2:	6666

In this Page <http://192.168.1.101/Simple/user.htm> (2.P401), assign two different port numbers for the FTP and Http Protocols (for example FTP : 9999, HTTP : 8888)

NOTE: Reboot the system after setup

Step 2 : Setup your firewall or gateway, assign a Local Virtual IP address, and open a port for the B401. The following figure is an example - you need to ask your Internet Service Provider.

- 1. P401 : IP : 192.168.1.100, HTTP Port : 6666, FTP Port : 7777
- 2. P401 : IP : 192.168.1.101, HTTP Port : 8888, FTP Port : 9999

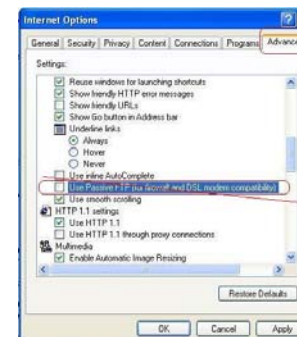


Step 3 : On a Local PC, open Internet Explorer, then type in the IP address : <http://192.168.1.100> or <http://192.168.1.101> to log in the P401 1 or 2.

Step 4 : On a Remote PC, open Internet Explorer, then type in the IP address : <http://61.30.13.40> : 6666 or <http://61.30.13.40> : 8888 to log in the P401 1 or 2.

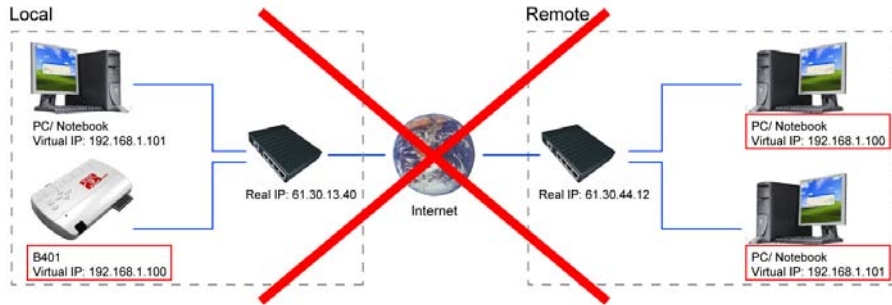


Step 5 : To setup the Internet Explorer for the FTP Client : click “Tools” → “Internet” → “Options” → “Advanced”. The “Internet Options” window will appear. Uncheck the item “Use Passive FTP (for firewall and DSL modem compatibility)”

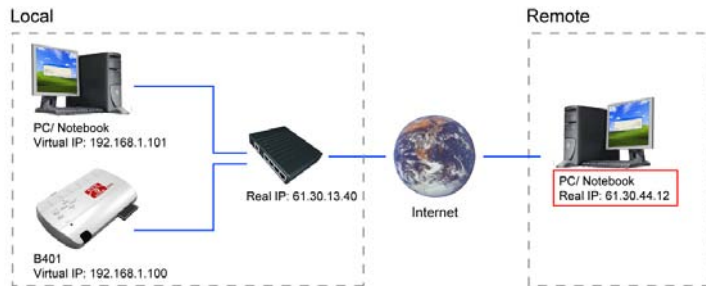


7.4 LIMITATION OF THE FTP PROTOCOL

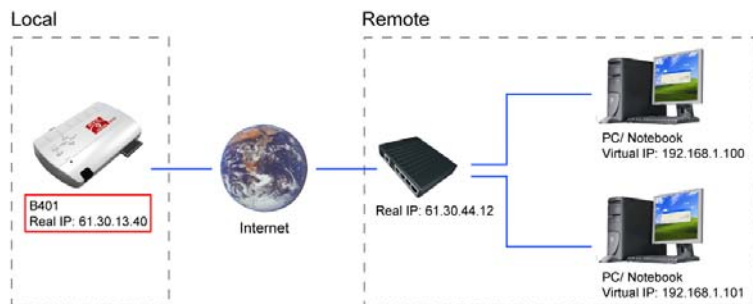
If your network connection is the same as the following figure, you can not transfer files with FTP. This is because both the FTP server (P401) and the FTP client (Remote PC) are using virtual IP addresses.



- You need to change the Remote PC to use a real IP address, or change the P401 to use a real IP Address

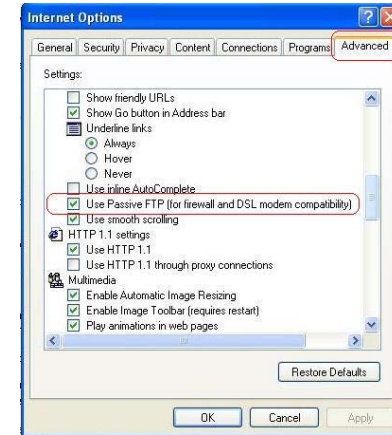


Method 1 : Change the Remote PC to use a Real IP address



Method 2 : Change the P401 to use a Real IP address

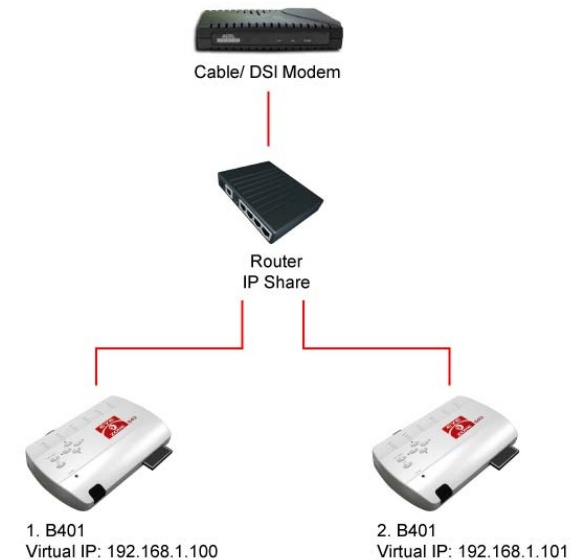
- Set up the Internet Explorer for the FTP client by checking the item “Use Passive FTP(for firewall and DSL modem compatibility)”



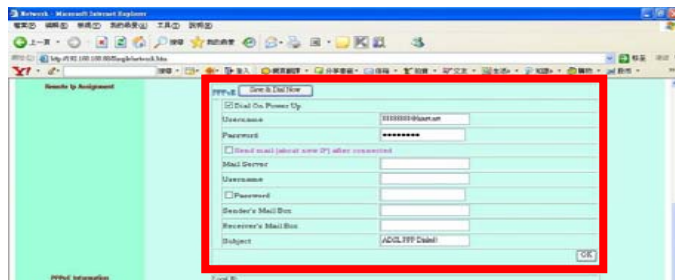
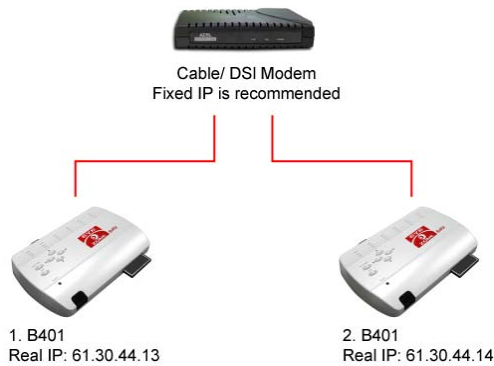
Internet Option

7.5 CONNECTING TO ADSL

- We suggest that you connect to ADSL through a router. Refer to the 7.2 for more information.



- If you want to connect B401 to ADSL without a router, please use the following steps to dial up PPPoE. If the IP Address is dynamic, you need to setup DDNS function.

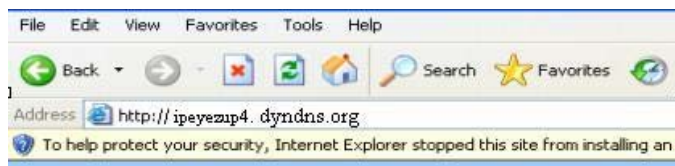


- DDNS Setup (Please connect to <http://www.dyndns.org/>) to get the DDNS account



- On a remote computer, open Internet Explorer, and type the IP address:

<http://ipevezup.dyndns.org>

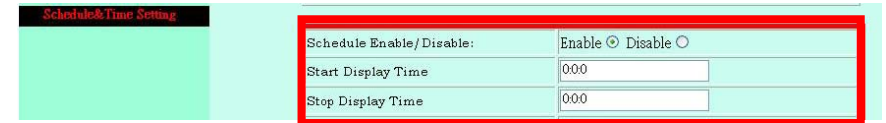


7.6 AUTO-DISPLAY FUNCTION

- Select "**Timer Setup**" to open the Time Setup window.



- **Auto Start Display / Stop Display** : In the "**Schedule & Timer Setting**" item, type in the "Start Display Time" (HH:MM:SS) and "Stop Display Time", then click "OK" to apply. The B401 will now auto display files at the designated time.



7.7 FTP DOWNLOAD FUNCTION

- Complete the server setup first. <Timer Setup> → <Auto Download & Remote FTP>

- **Remote FTP Enable / Disable**

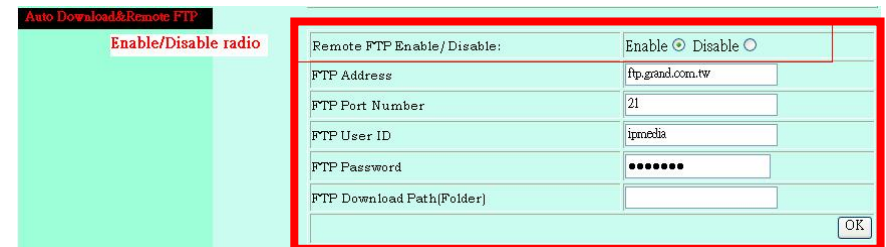
- **FTP Address** : Type in the domain name of the FTP site or IP address as was given to you by your Web hosting provider.

- **FTP Port Number** : The default port for FTP is 21. In most cases you should not change this number. If the FTP site uses a port other than 21, you should enter the correct port.

- **FTP User ID** : Type the user name for the Remote FTP server.

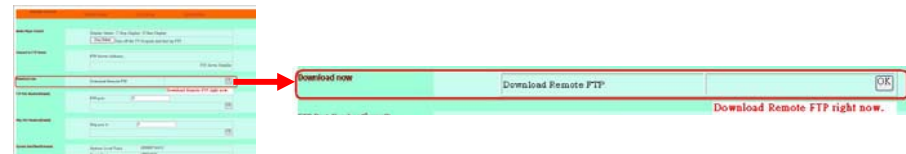
- **FTP Password** : Type the Password for the Remote FTP server.

- **FTP Download Path (Folder)** : Enter the folder path that you want to share.



7.7.1 Manual Download

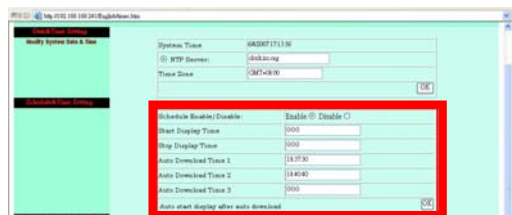
Select "**Network Control**" first. In the "**Download now**" item, click the "OK" button to download the latest files to the memory card from the designated server.



7.7.2 Auto-Download :

Select the “**Timer Setup**” first. In the “**Schedule & Timer Setting**” item, type in the auto download time. The B401 will auto download the latest files to memory card at the designated time from the designated server.

PS. The B401 can define up to 3 auto download times per day.



NOTE :

1. The Auto-Download function must be disabled before setting up the Manual Download function.



2. If the NTP server time synchronization error, please change the NTP server (clock.isc.org) to 204.152.184.72.



7.8 REMOTE CONTROL TO DISPLAY MEDIA FILES

Select “Stop Display” / “Start Display”, then click “Stop Display” / “Start Display” to stop or start display media files.



8. USING THE B401

Copy files (music, picture and movie) to the memory card first.

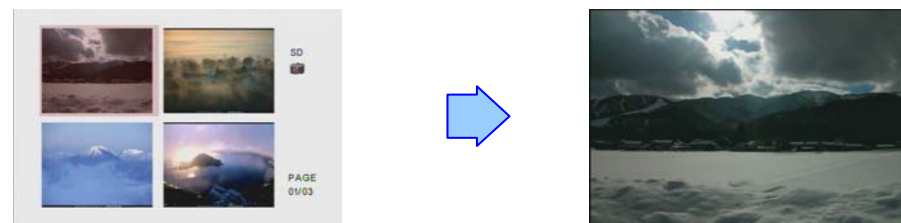
8.1 PLAY PICTURE FILE

Step 1: Press the “SLIDE” button on the remote control from any menu.



Step 2: The preview mode will show all the picture files on the memory card.

Use the “▲、▼、◀、▶” buttons to select the picture file, and press the “ENTER” button to play the picture file.



Step 3: If the “SLIDESHOW MODE” is disabled, press the “NEXT” button to play the next picture file, the “PREV” button to play the previous file.



8.2 PLAY MUSIC FILE

Step 1: Press the “MUSIC” button on the remote control from any menu.



Step 2: The “MUSIC LIBRARY” will show all the music files on the memory card.

Use the “▲、▼” buttons to select the music file, and press the “ENTER” button to play the music file.



Step 3: Press the “NEXT” button to play the next music file, the “PREV” button to play the previous file.



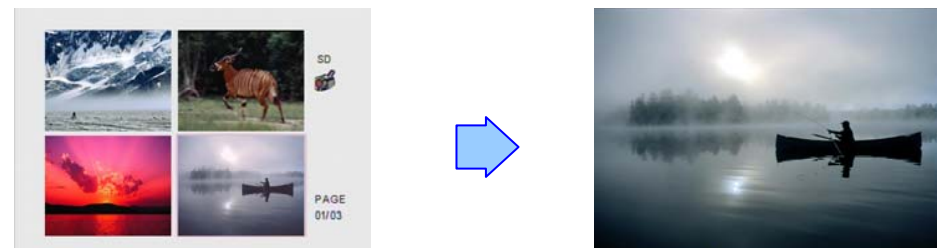
8.3 PLAY MOVIE FILE

Step 1: Press the “MOVIE” button on the remote control from any menu.



Step 2: The preview mode will show all the video files on the memory card.

Use the “▲、▼、◀、▶” buttons to select the movie file, and press the “ENTER” button to play the movie file.

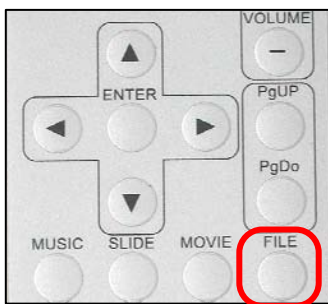


Step 3 : Press the “NEXT” button to play the next movie file, the “PREV” button to play the previous file.



8.4 FILE LIBRARY

Step 1 : Press the “FILE” button on the remote control from any menu.



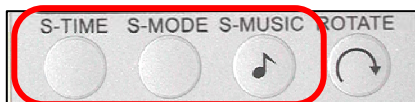
Step 2 : You can see all the files (including picture, music and movie) on the left panel of the “FILE LIBRARY”. Press the “▲、▼” buttons to select a file, and the information of the file will be shown on the right panel.



8.5 HOT KEY

You can use the “S-TIME”, “S-MODE” or “S-MUSIC” hot key on the remote control without selecting from the “Setup Menu”. (These functions are only used for playing picture files.)

- **S-TIME** : Interval time with 1,3, 5,10, 30, 60 seconds.
- **S-MODE** : With sequential, random auto slide shows etc 14 kind of selections
- **S-MUSIC** : Play the picture and music files at the same time.



9. TROUBLESHOOTING

Situation	Check Point
No Picture	<ol style="list-style-type: none"> 1. Check if the power supply is connected. 2. Make sure the B401 is turned on.
No response from the remote control	<ol style="list-style-type: none"> 1. Make sure there is a clear view between the remote control and the device. 2. Change the remote control's batteries.
Memory card	<ol style="list-style-type: none"> 1. Push cards gently and securely. 2. If the card does not insert easily, check the direction. 3. Confirm format of the card. <p>B401 supports CF memory card only.</p>
No sound	<ol style="list-style-type: none"> 1. Check if the mute function is on. 2. Check if the volume is turned up.
Forget User ID and Password	<p>Press the “Default” button for 10 seconds.</p> <p>Default User ID : root</p> <p>Default Password : admin</p>
Can't connect to FTP Folder or FTP Folder error	<p>Change the item Internet Explorer :</p> <p>Inter Optional → Advanced → Use Passive FTP (for firewall and DSL modem compatibility), then close the FTP Folder and try again.</p>