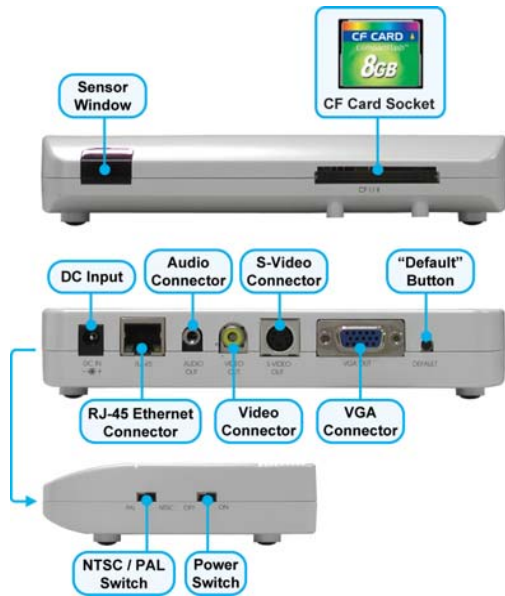


## QUICK GUIDE

### 1. Hardware Overview

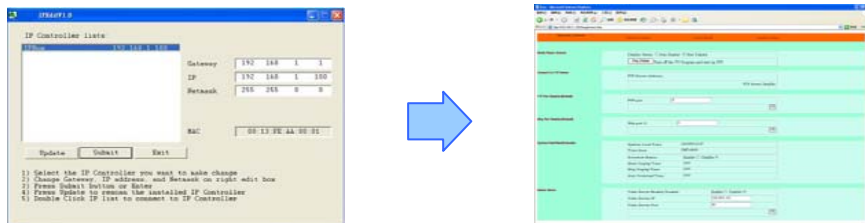


### 2. LOGIN B401 FOR THE FIRST TIME

**Step 1.** Confirm that the B401 is already connected to the network.

**Step 2.** Execute the "ipEdit.exe" in the CD. The "IP BOX.....192.168.1.100" has been listed in the left side, double click "192.168.1.100" to login the B401.

(Default IP Address: 192.168.1.100, Default User ID: root, Default Password: admin)



**NOTE:** If you can not connect to the address: 192.168.1.100, follow the steps below to get the network information..

**Step 1.** Click "Start" → "All Programs" → "Accessories" → "Command Prompt". A MS-DOS window will appear. Type "ipconfig" and then press "ENTER" to get the network information.

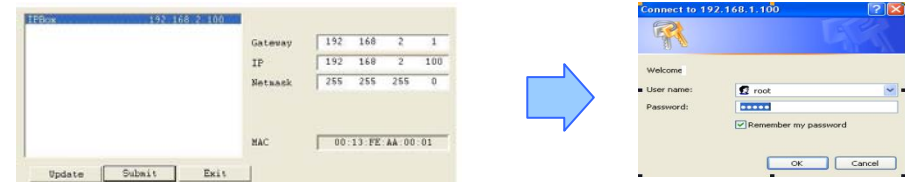


**Step 2.** Assign IP Address, Netmask(Subnet Mask) and Gateway(Default Gateway) for the IP Controller.

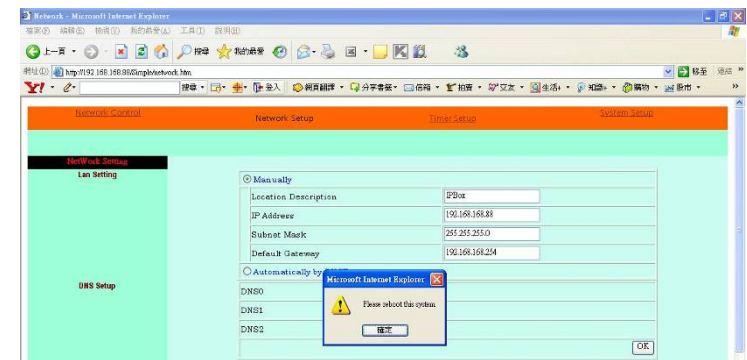
**NOTE:** You must use the same Subnet Mask "255.255.255.0" and Gateway "192.168.2.254". You can use any IP Address between 192.168.2.1-254, but make sure that the IP Address has never been used or is used by another IP addressable device.

**Step 3 :** For example, key in the following parameters and click "Submit".

(Default IP Address: 192.168.1.100, Default User ID: root, Default Password: admin)



**NOTE:** After setting up the Network, reboot the system.



**PS. Please consult the "User Manual.doc" in Driver CD for more detail.**