

User Manual



CONTENTS

1. Package Contents.....	3
2. Introduction.....	3
3. Features.....	4
4. Hardware Overview.....	5
5. Setting Up.....	6
5.1 Entering the Management Console.....	6
5.2 The Management Console Overview.....	7
5.3 Media Content Configuration.....	8
5.4 Network Configuration.....	9
5.5 Management Settings.....	10
6. Using the PAE15/ 17/ 19/ 22V.I.P.....	11
6.1 Play the Media Content from the CF Card.....	11
6.2 Play the Media Content from a WEB Server.....	12
7. Troubleshooting.....	13

1. PACKAGE CONTENTS



PAE15/ 17/ 19/ 22V.I.P



User Manual



CF Card
Protective Cover



Power Adapter
(PAE15/17/19V.I.P DC 12V, 7A)
(PAE122V.I.P DC 12V, 8.33A)

2. INTRODUCTION

The PAE15V.I.P/ PAE17V.I.P/ PAE19V.I.P/ PAE22V.I.P is a self-service terminal which integrates hardware and software to create an interactive environment such as product display for sale, and information display for multimedia. The users can move, drag or drop contents on the 15"/ 17"/ 19" touch screen with hand.

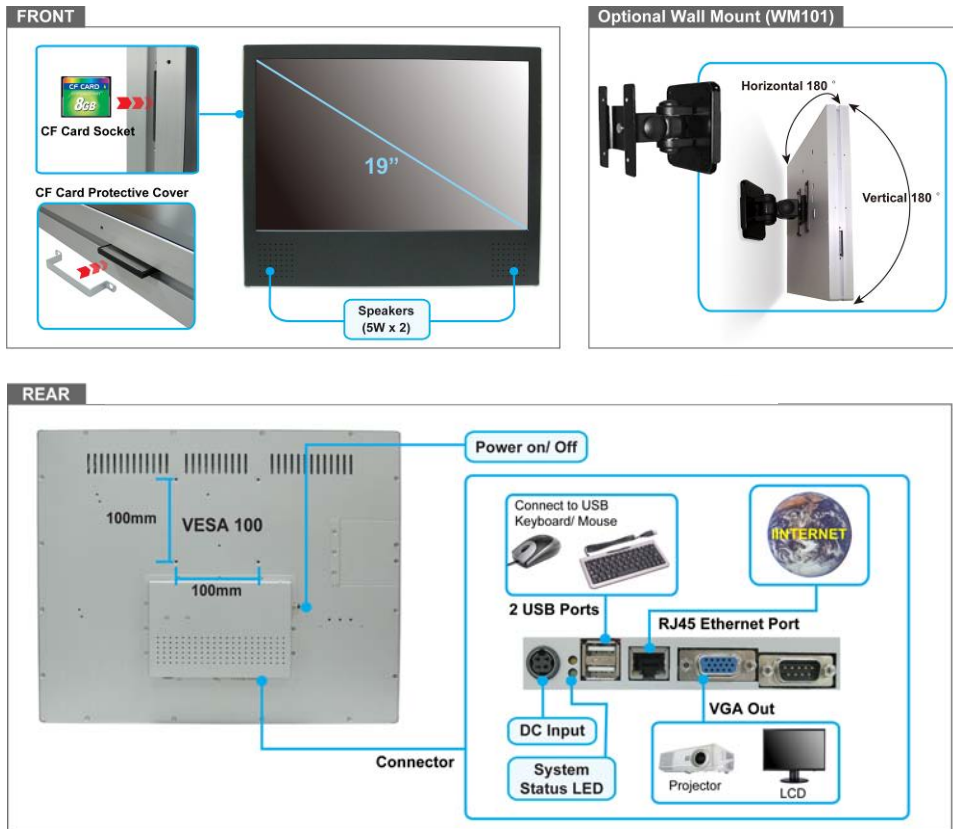
The PAE15V.I.P/ PAE17V.I.P/ PAE19V.I.P/ PAE22V.I.P can directly play the HTML web page on the Internet or on the CF card. The contents (W3C WEB standard) can be edited and applied layout design easily,

The PAE15V.I.P/ PAE17V.I.P/ PAE19V.I.P/ PAE22V.I.P can be used in department stores, exhibitions, libraries, office buildings, airports, and other public places for advertising, presentations, training and other media applications.

3. FEATURES

- Built-in 15"/ 17"/ 19"/ 22" TFT-LCD display and stereo speakers (5W x 2).
- Supports Touch Screen function.
- Web based content (W3C WEB Standard) management solution allows you to edit and apply layout design easily.
- Supports shockwave flash (SWF) format.
- Supports Java Script/ Applets.
- Supports CF memory card.
- Supports 2 USB ports for connecting to USB keyboard and mouse.
- Supports VGA out for connecting to external monitor.
- Provides RJ-45 port for connecting to an Ethernet network.
- Support VESA 100 (100mm x 100mm).
- All-in-one embedded System (PAE15/ 17/ 19V.I.P)
 - CPU: 1.5GHz (X86)
 - Memory: 1GB DDR II
 - Storage: Flash Memory option
 - OS: Linux Kernel 2.6.x
- All-in-one embedded System (PAE22V.I.P)
 - CPU: CM440 1.86GHz
 - Memory: 1GB DDR II
 - Storage: Flash Memory option
 - OS: Linux Kernel 2.6.x

4. HARDWARE OVERVIEW



- **CF Card Socket:** Supports CF card.
- **Speakers:** Build-in speakers (5W x 2).
- **VESA Hole:** Provides VESA Hole (100 x 100 mm) for wall-mounted purpose.
- **Power On/ Off:** Press the button to turn on/ off the unit.
- **DC Input:** Connect the provided power adapter.
- **System Status LED:** Indicates network access, storage access and power status
- **USB Port:** Supports x 2 USB interfaces for connecting keyboard and mouse
- **RJ45 Ethernet Port:** For connects to 10Base-T Ethernet cabling or 100Base-TX Fast Ethernet cabling.
- **VGA Output:** Supports one VGA output for external monitor.

5. SETTING UP

5.1 Entering the Management Console

User could enter the management console, either the PAE15/ 17/ 19/ 22V.I.P on startup or when it is running. About the methods to enter the management console are list below:



■ Entering the Management Console on Startup:

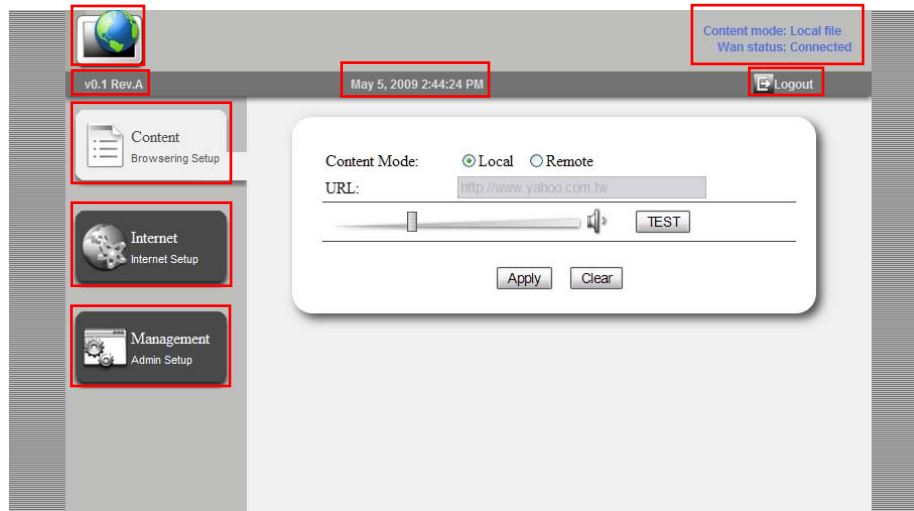
- Step1:** Connect the keyboard to the USB port of PAE15/ 17/ 19/ 22V.I.P before start it.
- Step2:** Remove the CF card if there is any CF card inserted to the CF socket.
- Step3:** Boot the PAE15/ 17/ 19/ 22V.I.P and wait for the login console appear.
- Step4:** Enter the "User Name" and "Password" and click on the "Login" button. (The default user name and password are Admin/ Admin)
- Step5:** Click on the "Clear" button for clearing the "User Name" and "Password" text box if the user inputted the wrong user name and password.



■ Entering the Management Console when PAE15/ 17/ 19/ 22V.I.P is running:

- Step1:** Connect the keyboard to the USB port of PAE15/ 17/ 19/ 22V.I.P.
- Step2:** Press "Ctrl" and "E" key simultaneously for switching the PAE15/ 17/ 19/ 22V.I.P from playing mode to management mode.
- Step3:** Enter the "User Name" and "Password" and click on the "Login" button. (The default user name and password are Admin/ Admin)
- Step4:** Click on the "Clear" button for clearing the "User Name" and "Password" text box if the user inputted the wrong user name and password.

5.2 The Management Console Overview

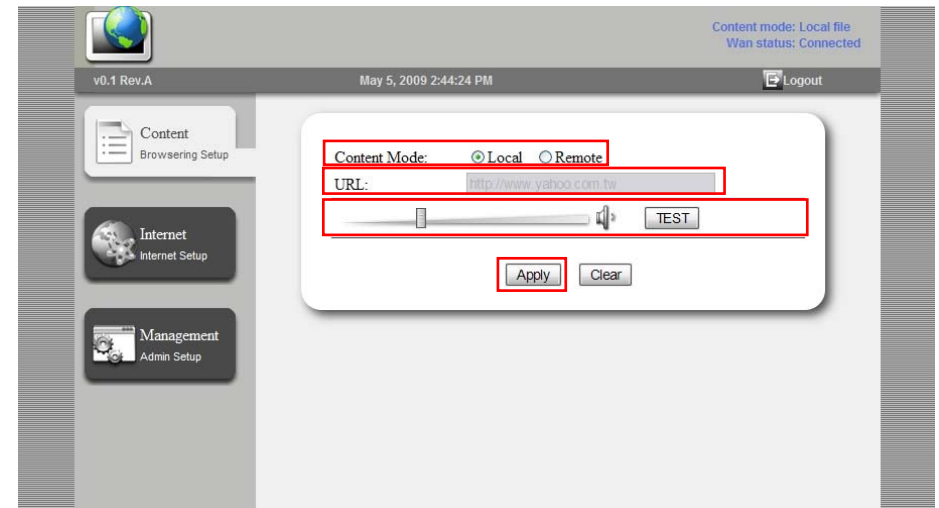
After login in the management console, user could configure the content location, the network setting and other parameters of PAE15/ 17/ 19/ 22V.I.P.



- **Mode Switching:** User can click on the  icon to back to the playing mode.
- **Device Status:** The status of content location and network connection will be shown on the screen.
- **Firmware Version:** The current F/W version will be shown on the screen.
- **System Time:** The system time will show here.
- **Logout Button:** Logout the management console by pressing  icon.
- **Content Configuration:** User could change the content location in this page.
- **Network Configuration:** User could configure the network setting in this page.
- **Management Settings:** User could configure UI language, clock and user password in this page.

5.3 Media Content Configuration

User could instruct the PAE15/ 17/ 19/ 22V.I.P to open the media content from the CF card or from a Web server. You could also adjust the audio volume of the unit. All these settings are configured via the "Media Content Configuration" page.



- **Content Mode:** Select "Local" if the user wants the unit to open the media content from the CF card. And instruct the unit to open the media content from a remote WEB server by selecting "Remote".
- **URL:** If the "Remote" is set, then user needs to specify the URL of the media content.
- **Volume Control:** User could adjust the volume and test the volume control by the "TEST" button.
- **Apply Button:** Save the configuration by pressing the "Apply" button. Any change should be saved for take effect.

5.4 Network Configuration

PAE15/ 17/ 19/ 22V.I.P support IEEE 802.3 Ethernet and TCP/IP. You might configure those network parameters in this management console.

The screenshot shows the Network Configuration page. The interface includes a sidebar with 'Content', 'Internet', and 'Management' sections. The main content area is titled 'WAN Setting' and contains several configuration options. Red boxes highlight the following elements: the 'WAN Setting' radio buttons (Enable/Disable), the 'IP Obtained Automatically (DHCP) / Static IP' radio buttons, the 'IP address', 'Netmask', and 'Gateway' input fields, the 'DNS Server' radio buttons (Automatic/Manual), the 'Primary DNS' and 'Secondary DNS' input fields, the 'Hostname' input field, the 'MTU' field showing '1454 Bytes (576~1454)', and the 'Apply' button.

- **WAN Setting:** Select “Enable” for activate the network function, and “Disable” for shutting down the network function. If this setting is set to “Disable”, then the user could not set the “Content Mode” to “Remote”.
- **DHCP / Static IP:** Use DHCP if the user wants the unit to get its IP setting dynamically (from a DHCP server). Choose “Static IP” if the user wants to assign a static IP to the unit. And if “Static IP” is selected, user should specify the “IP Address”, “Netmask”, and the “Gateway” of unit in the corresponding text box.
- **DNS setting:** User could assign preferred DNS server for PAE15/ 17/ 19/ 22V.I.P in this division. When DHCP is set, user could choose either “Automatic Setting” or “Manual Setting”. When “Static IP” is chosen, user should assign the DNS server manually.
- **Hostname:** User could specify the hostname of PAE15/ 17/ 19/ 22V.I.P here.
- **MTU Setting:** User could configure the Maximum Transmission Unit (MTU) of PAE15/ 17/ 19/ 22V.I.P here. In a Fast Ethernet environment, the recommend value is 1454.
- **Apply Button:** Save the configuration by pressing the “Apply” button. Any change should be saved for take effect.

5.5 Management Settings

In the Management Settings page, user could configure the UI language, clock, user password, reset the configuration to factory default, and reboot the PAE15/ 17/ 19/ 22V.I.P

The screenshot shows the Management Settings page. The interface includes a sidebar with 'Content', 'Internet', and 'Management' sections. The main content area is titled 'Management' and contains several configuration options. Red boxes highlight the following elements: the 'GUI setting' dropdown menu (English), the 'Time Setting' fields (Year: 2009, Month: 5, Day: 5), the 'Password Change' section (User Name: Admin, Password: ****), the 'Default Value Setting' button (Execute), the 'System Restart' button (Execute), and the 'Apply' button.

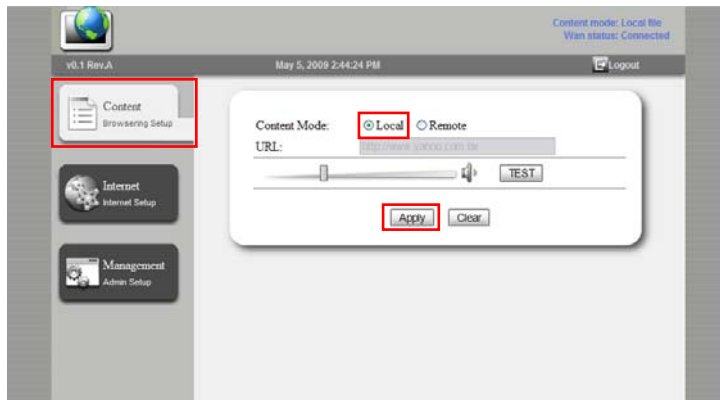
- **GUI Setting:** User could select the language of the UI here.
- **Time Setting:** User could adjust the system time of PAE15/ 17/ 19/ 22V.I.P here.
- **Password Change:** User could change the administrator name and password here. The default user name is “Admin”, and password is “Admin”.
- **Default Value Setting:** User could reset all the configuration of PAE15/ 17/ 19/ 22V.I.P to factory default by pressing the “Execute” button right of the “Default Value Setting”.
- **System Reset:** User could reboot the PAE15/ 17/ 19/ 22V.I.P by pressing the “Execute” button right of the “System Restart”.
- **Apply Button:** Save the configuration by pressing the “Apply” button. Any change should be saved for take effect.

6. USING PAE15/ 17/ 19/ 22V.I.P

There are two ways to locate the media content for PAE15/ 17/ 19/ 22V.I.P playing, either from a local CF card or from a remote WEB server. PAE15/ 17/ 19/ 22V.I.P supports a build-in web browser which could open HTML documents and play the media contents embedded in those pages directly. Supported media content includes movies, pictures, music and animations. As long as the page is written according to the HTML standard from W3C, PAE15/ 17/ 19/ 22V.I.P could play the content with no difficulty.

6.1 Play the Media Content from the CF Card

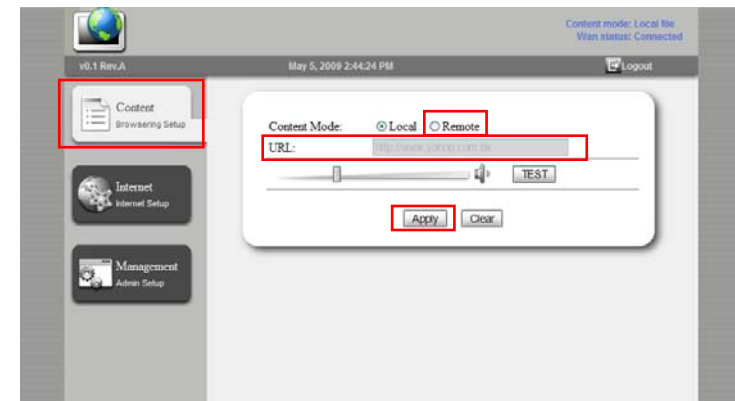
- Connect USB keyboard and mouse to PAE15/ 17/ 19/ 22V.I.P.
- Power on the PAE15/ 17/ 19/ 22V.I.P by pressing the power on button and login into the Management Console. About how to enter the Management Console, please see session 5.
- Click on the “Content” icon for configuring PAE15/ 17/ 19/ 22V.I.P to open the media content locally (from the CF card). By default, the location of the content should be set to “Local”.
- Click on the “Apply” button for saving the configuration.




- Create a folder named “ht_content” on the CF card. Copy all the media contents, include “index.html” (the default page for PAE15/ 17/ 19/ 22V.I.P to open), other linked html documents, movie, picture, music, and animation files, to the “ht_content”.
- Power off the PAE15/ 17/ 19/ 22V.I.P. Insert the CF card to the PAE15/ 17/ 19/ 22V.I.P and start the PAE15/ 17/ 19/ 22V.I.P by pressing power on button.
- The content of the “index.html” should be displayed on the screen.

6.2 Play the Media Content from a WEB Server

- Power on the PAE15/ 17/ 19/ 22V.I.P and login into the Management Console. About how to enter the Management Console, please see session 5.
- Click on the “Internet” icon for network configuration if needed. (If the network function sets to disable, you might not be able to change the content location from “Local” to “Remote”). About how to configure the network, please see session 5.
- Click on the “Content” icon for configuring the PAE15/ 17/ 19/ 22V.I.P to open the media content remotely (from a remote WEB server).
- Input the URL of the HTML document you’d like the PAE15/ 17/ 19/ 22V.I.P to open in the “URL” text box.
- Click on the “Apply” button for saving the configuration.



- Click on the  icon, then the PAE15/ 17/ 19/ 22V.I.P will switch to the display mode and connect to the WEB server automatically.

7. TROUBLESHOOTING

Situation	Check Point
No Picture	<ol style="list-style-type: none"><li data-bbox="383 292 1059 316">1. Check power cable.<li data-bbox="383 339 1059 363">2. Make sure the file format on the CF card is correct.
Can't browser the Web	<ol style="list-style-type: none"><li data-bbox="383 395 1059 419">1. Check that the network connection.<li data-bbox="383 443 1059 467">2. Check the Content Mode is set to Remote (refer to section 5.3).<li data-bbox="383 491 1059 515">3. Make sure the WAN function is enabled (refer to section 5.4)<li data-bbox="383 539 1059 608">4. Check if the network settings are correctly configured (refer to section 5.4).
No sound	<ol style="list-style-type: none"><li data-bbox="383 639 1059 663">1. Check if the volume is set properly.
Memory card	<ol style="list-style-type: none"><li data-bbox="383 687 1059 711">1. Insert the CF card gently and securely.<li data-bbox="383 735 1059 759">2. If the CF card does not insert easily, check the direction.